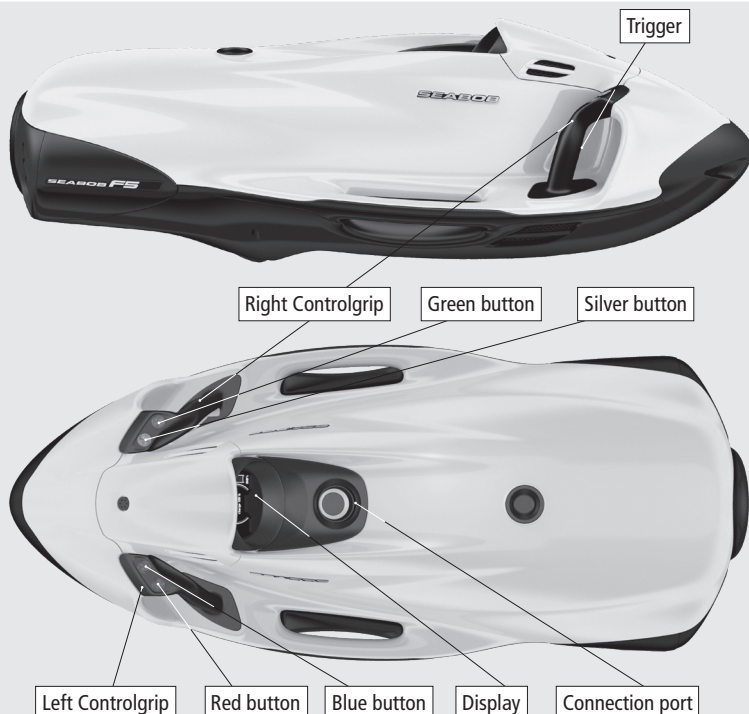


# Quick Reference for SEABOB F5



## Display

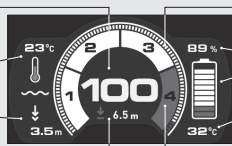
### Information display

Power  
(in % of maximum power)

Water temperature

Diving depth

Set maximum diving depth



Speed range +  
set maximum power (red dot)

Accumulator charge state

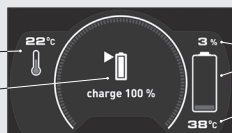
Accumulator temperature  
(in°C)

Power Level

### Charge display

Water temperature

Charge symbol



Accumulator charge state

Accumulator temperature  
(in°C)



### Warning symbol


- Motor temperature warning ("motor overheated")  
→ Power is limited to Power Level 2
- Accumulator temperature warning ("accumulator overheated")  
→ Power is limited to Power Level 2
- Warning: Accumulator error ("accumulator error")  
→ Emergency operation! Power is limited to Power Level 2 or motor stops
- Warning: Impeller locked ("impeller locked") → Motor stops





### Workshop symbol

- Motor, accumulator or system defect → Contact manufacturer or specialist dealer!

**Read the comprehensive Operation Manual carefully before using the SEABOB F5!  
Pay special attention to all safety information and the instructions regarding the intended use!**

 Never expose the SEABOB and the charger to high temperatures (max. 60 °C / 140 °F) caused e.g. by open fire, direct sunlight or by storage inside a closed motor vehicle or boot. If exposed to heat, flammable gases can be discharged causing serious injury. In addition, the TFT display may become irreparably damaged if exposed to heat.

 Never transport a fully charged SEABOB by aircraft or over long distances. The SEABOB should only be partially charged during transport (charge state "air transport / storage"). Do not switch off the SEABOB for transport before the aircraft symbol is displayed. If instructions are disregarded, flammable gases can be discharged causing serious injury.

 Charge the SEABOB after each use (within 24 hours) and during longer periods of storage continuously (trickle-charge) to at least the charge state "air transport / storage" to avoid irreparable total discharge of the valuable High-Energy Li-Ion accumulator cells. Use only chargers supplied by CAYAGO AG and for each respective specific SEABOB model.


**Charging / Switching on / Switching off (Off mode)**

**User**

1. Connect charger: First plug connector into connection port, then plug mains plug into mains socket
2. For partial charging (for air transport / storage) tap green button
3. For full charging (for operation) tap red button
4. To complete partial charging: Disconnect the charger when the aircraft symbol is displayed
5. To complete full charging: Disconnect the charger when the completely full accumulator symbol is shown

**SEABOB**

- Charge display appears after a brief system check (Charge mode)
- Charge symbol for partial charging appears, SEABOB is being partially charged
- Charge symbol for full charging appears, SEABOB is being fully charged
- Charging process is complete, SEABOB is switched off after 5 seconds for air transport / storage (Off mode)
- Charging process is complete, SEABOB is switched off after 5 seconds (Sleep mode)

 To complete the charging process, first pull the mains plug from the mains socket. Only then should you disconnect the connector from the connection port. Danger of short circuit!

**Note:** The SEABOB can only be switched on from Off mode or switched off into Off mode using a connected and active charger.

**Switching on (from Sleep mode)**

**User**

1. Tap blue button
2. Push Trigger against Controlgrip (within 5 seconds)
3. Release Trigger completely

**SEABOB**

- Display is switched off (Sleep mode)
- Display is switched on, SEABOB logo and prompt "push trigger" appear
- SEABOB logo disappears again
- Information display appears

## Switching off (to Sleep mode)

### User

1. Tap button combination silver – blue in quick sequence
2. Push Trigger (within 5 seconds)

### SEABOB

- Information display (power is displayed as "0 %")
- Prompt "sleep mode - confirm with trigger" appears
- SEABOB is switched off (Sleep mode)

**Note:** If no actions are performed by the user within 10 minutes (Time-off), the system will switch off automatically to Sleep mode.

## Settings

### User

1. Tap button combination silver – blue – red in quick sequence
2. Enter Owner-PIN and confirm with Trigger (see below)
3. Switch between menu items with green or red button and select by pushing Trigger
4. Select list: tap green or red button to scroll between individual preset values
5. Entry mask: tap green or red button (repeatedly) to increase or decrease value, tap blue or silver button to move cursor to the left or to the right
6. Push Trigger against Controlgrip
7. Tap green or red button until the menu item "exit" appears, select by pushing Trigger

### SEABOB

- Information display (power is displayed as „0 %“)
- Owner-PIN prompt appears
- PIN is verified and menu (upper menu level) appears
- Select list or entry mask appears (depending on the menu item selected)
- Select list: setting of maximum diving depth, maximum power, display brightness
- Entry mask: setting of operating time limit, User PIN, date / time
- Settings are confirmed , upper menu level appears
- Information display appears

**Note:** The Timer limiting the operating time is activated at an operating time greater than "0:00".

## Entering PIN

### User

1. Tap red button (repeatedly)
2. Tap green button (repeatedly)
3. Tap blue button (repeatedly)
4. Tap silver button (repeatedly)
5. Push Trigger against Controlgrip

### SEABOB

- Digit under cursor decreases
- Digit under cursor increases
- Cursor moves to the left
- Cursor moves to the right
- PIN is confirmed and verified

**Note:** Please find your Owner-PIN on the supplied certificate.

## Operation

### User

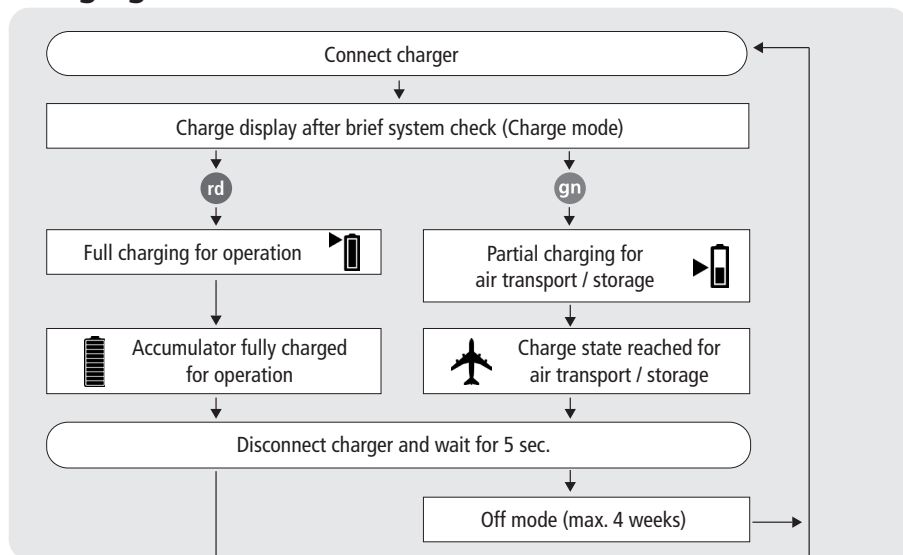
1. Switch on SEABOB
2. Tap green button (repeatedly) to increase the power (also during operation)
3. Tap red button (repeatedly) to decrease the power (also during operation)
4. Push Trigger against Controlgrip
5. Release Trigger

### SEABOB

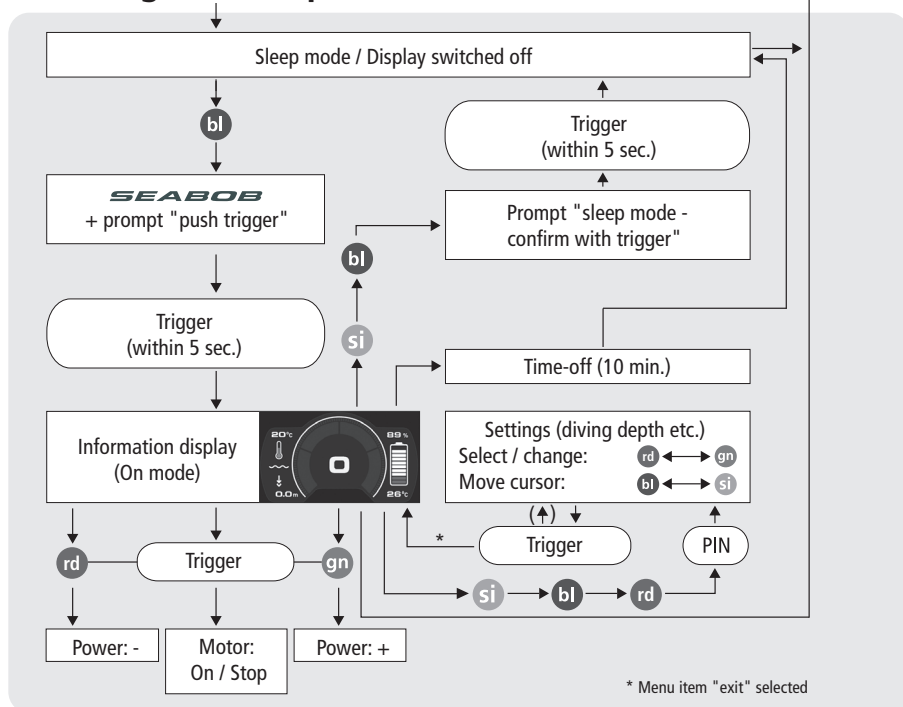
- Information display appears
- Power increases by one Power Level with every tap of the button
- Power decreases by one Power Level with every tap of the button
- SEABOB starts (minimum power of Power Level 1)
- SEABOB stops

**Note:** Always observe accumulator charge state. When the accumulator is discharged to approx. one third of its charge state, the maximum power is automatically reduced incrementally to save the accumulator cells.

# Charging



# Switching on and operation



Action: ○ + ○ = User □ = SEABOB

Buttons: rd = red bl = blue gn = green si = silver